

# 20 22488 116th Avenue, Maple Ridge

\$829,000



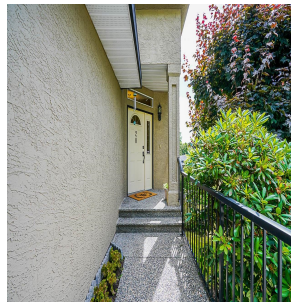
END UNIT WITH A NEW KITCHEN AND APPLIANCES. This Prestigious and one of the most desirable townhouse complexes in Maple Ridge offers a functional floor plan, central location close to transportation shopping and Recreation Centre. Enjoy the awesome panoramic view of Mt. Baker and the Fraser River from the master bedroom with a three-sided fireplace and ensuite with twin sinks, jacuzzi tub and separate shower. The Kitchen was renovated a year ago with new Appliances.

## KEY INFORMATION

MLS® R2744975  
Residential Attached  
East Central Maple Ridge  
3 Bedrooms  
3 Bathrooms  
2,265 SF

## FEATURES

Year Built: 1992  
Listed By: rennie & associates realty ltd.



**Art Seroff** PREC\*  
778.223.0033  
aseroff@rennie.com  
rennie.com/artseroff

**rennie**