

203 2485 Larch Street, Vancouver

\$2,189,900



Innovative design meets luxurious living in Vancouver's most coveted urban village. Monument Kitsilano offers contemporary elegant design and innovative details throughout. With expansive balconies and a shared rooftop terrace, Monument pays homage to a true West Coast community. This modern design is supported by enduring quality, with forward-thinking Cross Laminated Timber construction - a form that is strong, durable and sustainable. Featuring efficient layouts with expansive living spaces, heating and cooling in every home and large windows allowing ample natural light. European-inspired kitchens and a collection of 30" Gaggenau appliances deliver an efficient gourmet chef experience. Steps from the future rapid transit, boutique shops and top ranked schools. Open Sat 12-2pm

KEY INFORMATION

MLS® R2745320

Residential Attached

Kitsilano

2 Bedrooms

2 Bathrooms

1,356 SF

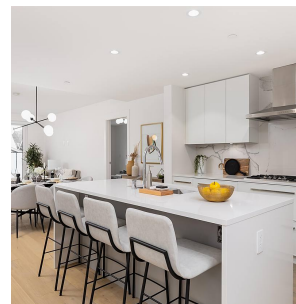
\$847.90 Maintenance Fees

FEATURES

Year Built: 2022

Views: Mountain

Listed By: rennie & associates realty ltd.



Nick Prastos
604.307.3953
nprastos@rennie.com
rennie.com/nickprastos



Candace Cheung PREC*
604.649.4328
ccheung@rennie.com
rennie.com/candacecheung

rennie