

# 702 10620 150 Street, Surrey

\$599,900



Welcome to your new home at Linclon's Gate! This Southwest facing corner townhouse is the perfect place to enjoy BBQs in your private backyard. This 2 level/2 spacious bedroom/2 bath home comes with upgraded kitchen appliances for a chef's dream. In-suite laundry and storage. Parking is included right next to your front door with additional spots available if needed. Only steps away from Guildford Mall/Transit Exchange for your every day needs. Very easy access to Hwy#1 with good schools nearby. An outdoor pool for those summer days plus an indoor hot-tub and sauna next to racquetball courts are within this family friendly complex for your use. Pets are most welcome here as are rentals. Great investment opportunity!

## KEY INFORMATION

MLS® R2746225

Residential Attached

Guildford

2 Bedrooms

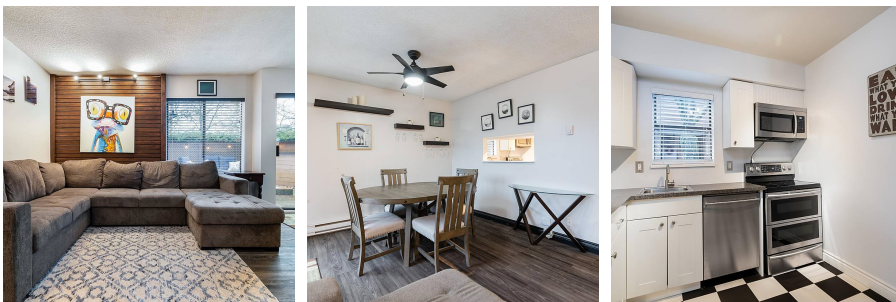
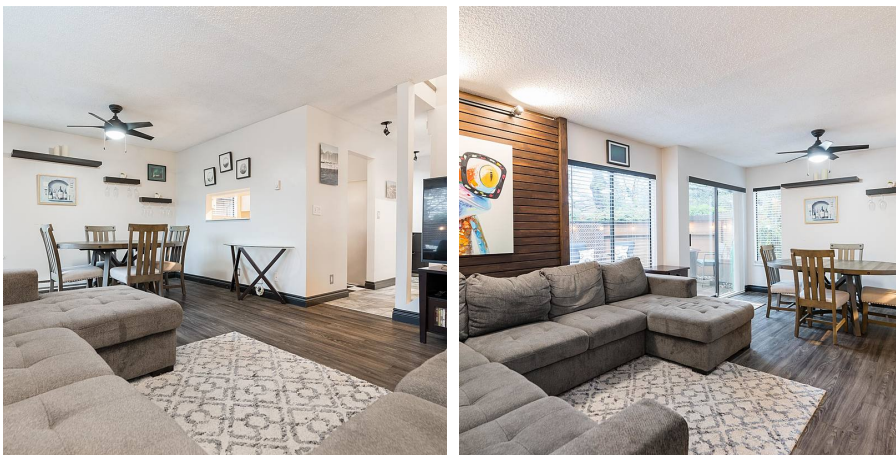
2 Bathrooms

1,032 SF

## FEATURES

Year Built: 1981

Listed By: rennie & associates realty ltd.



**Kirsten Jantunen**

604.722.2517

[kjantunen@rennie.com](mailto:kjantunen@rennie.com)

[rennie.com/kirstenjantunen](http://rennie.com/kirstenjantunen)

**rennie**