

802 5766 Gilbert Road, Richmond

\$934,900



SE Corner Home with OVER-SIZED Wrap Around PATIO in Richmond's most iconic building, CASCADE CITY by Landa Global, designed by renowned Rafii Architects & Arno Matis. Bright, open layout with plenty of windows for natural light; A/C, Miele appliance package + engineered hardwood floors throughout. Surrounded by restaurants, shops and services. Richmond Centre, Aberdeen Centre + YVR airport all a short drive away! Easy to get downtown w/ Canada Line nearby. Amenities incl. exclusive 3,000sf double-height Fitness Centre, Guest Suite, multi-functional Club Lounge, lushly landscaped 25,000sf podium-level outdoor space + much more! Parking and Storage included! Ready to move in!

KEY INFORMATION

MLS® R2749390

Residential Attached

Brighthouse

2 Bedrooms

2 Bathrooms

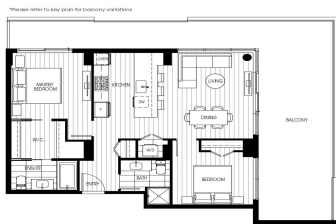
849 SF

\$483.53 Maintenance Fees

FEATURES

Year Built: 2022

Listed By: rennie & associates realty ltd.



PLAN C8
2 BEDROOM, 2 BATH
BEDROOM: 849 SF
OUTDOOR: 495 - 1,026 SF



Hanson Lu PREC*
604.787.2578
hlu@rennie.com
rennie.com/hansonlu



Jessica Lozada PREC*
604.360.0025
jlozada@rennie.com
rennie.com/jessicalozada

rennie