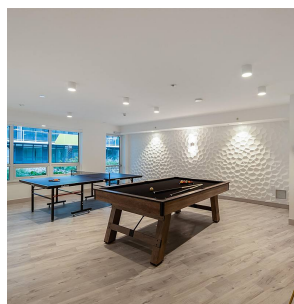
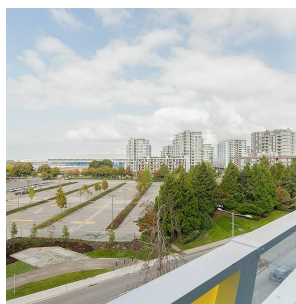
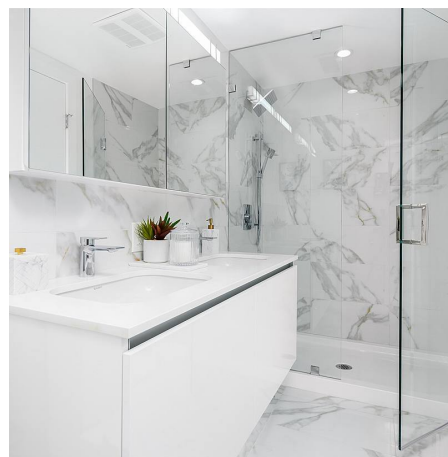
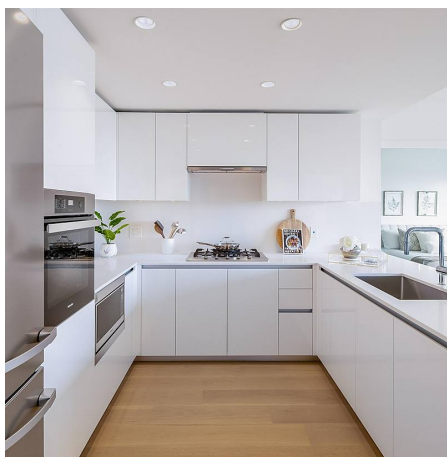


512 5788 Gilbert Road, Richmond

\$829,900



Incredibly functional floor plan with generously sized & separated bedrooms in Richmond's most iconic building, CASCADE CITY by Landa Global, designed by renowned Rafii Architects & Arno Matis. Bright, open layout with plenty of windows for natural light; A/C, Miele appliance package + engineered hardwood floors throughout. Surrounded by restaurants, shops and services. Richmond Centre, Aberdeen Centre + YVR airport all a short drive away! Easy to get downtown w/ Canada Line nearby. Amenities incl. exclusive 3,000sf double-height Fitness Centre, Guest Suite, multi-functional Club Lounge, lushly landscaped 25,000sf podium-level outdoor space + much more! Parking and Storage included! Ready to move in! Open House: Saturday February 4th 2-4pm.

KEY INFORMATION

MLS® R2750499

Residential Attached

Brighthouse

2 Bedrooms

2 Bathrooms

847 SF

\$483.53 Maintenance Fees

FEATURES

Year Built: 2022

Listed By: rennie & associates realty ltd.



Hanson Lu PREC*
604.787.2578
hlu@rennie.com
rennie.com/hansonlu



Jessica Lozada PREC*
604.360.0025
jlozada@rennie.com
rennie.com/jessicalozada

rennie