

312 14980 101a Avenue, Surrey

\$449,800



Top Floor 1BR 1BTH Unit LARGE 800 SF interi and tree-lined views. Low strata fee, well maintained building, updated common areas. Spacious, eat-in kitchen featuring stainless steel appliances & a handy pass-through window allowing in natural light. Unwind before a cozy fireplace in your open living/dining room or step out onto the generous balcony for a relaxed Summer bbq. Xtra Large master bedroom with 2 closets (1 walk in). Ideal for all lifestyles, Cartier Place allows for an easy commute to neighbouring cities via Fraser Hwy, Port Mann Bridge & skytrain just a few blocks away. Enjoy a stroll to Guildford Town Centre, Walmart, Elem, Johnston Sec, grocery stores, restaurants & shops. 1 parking & 1 locker.

KEY INFORMATION

MLS® R2751703

Residential Attached

Guildford

1 Bedroom

1 Bathroom

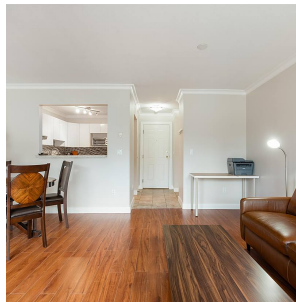
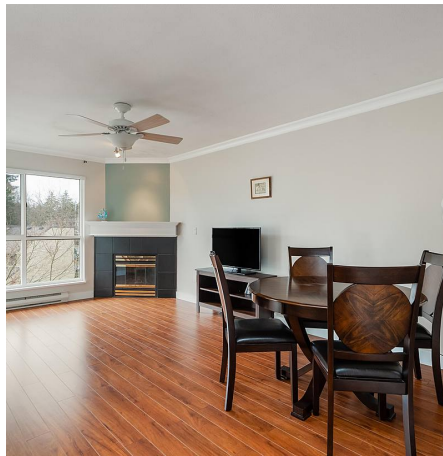
800 SF

\$306.00 Maintenance Fees

FEATURES

Year Built: 1993

Listed By: rennie & associates realty ltd.



Simon Lai PREC*
778.881.3603
slai@rennie.com
rennie.com/simonlai

rennie