

2701 1323 Homer Street, Vancouver

\$959,000



Welcome to PACIFIC POINT 2 in YALETOWN, this fantastic complex originally built in 1993 was completely renovated and warrantied by award-winning BOSA Development in 2013. It is fully-rainscreened with new windows in 2022. This beautiful SUB-PENTHOUSE has 2 BEDS, 1 BATH and 1 large SOLARIUM (can be a 3rd bedroom). This bright corner unit has stunning city and mountain views. Great efficient layout. Steps to public transit, the Seawall and David Lam Park. AMENITIES include: concierge, indoor pool, gym, sauna, hot tub, common room and more. Showings by appointment anytime. Open House Saturday/Sunday March 4th/5th 2-4pm.

KEY INFORMATION

MLS® R2755609

Residential Attached

Yaletown

2 Bedrooms

1 Bathroom

935 SF

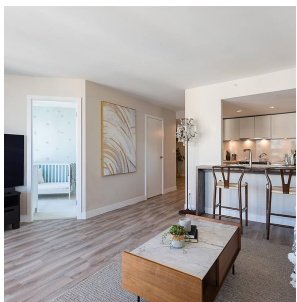
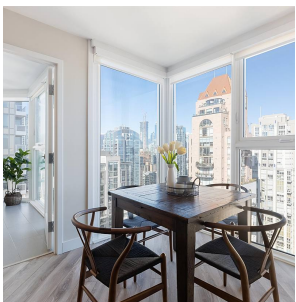
\$492.72 Maintenance Fees

FEATURES

Year Built: 1993

Views: City&Mountain

Listed By: rennie & associates realty ltd.



Carmen Hou
604.500.7611
chou@rennie.com
rennie.com/carmenhou

rennie