

1633 E 11th Avenue, Vancouver

\$2,389,000



Absolutely stunning half duplex located steps to Commercial Drive! Completed in 2020 this spacious home offers the upmost functionality and style. The open main floor plan is perfect for relaxing and entertaining with 10' ceilings, gas fireplace, and chef's kitchen. Upstairs offers three large bedrooms complete with their own ensuite bathrooms. A fully legal suite located below with its own address and exterior access is the perfect mortgage helper or additional living space. A beautifully crafted home complete with Air-Conditioning, built-in sound system, security system, and wide plank white Oak floors. Walking distance to some of Vancouver's finest restaurants, trendy shops, markets, and the Commercial-Broadway SkyTrain station. Truly a must see.

KEY INFORMATION

MLS® R2755715

Residential Attached

Grandview Woodland

4 Bedrooms

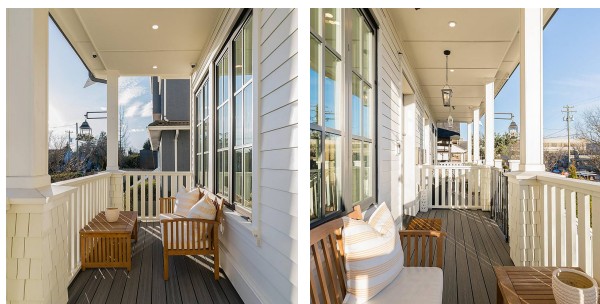
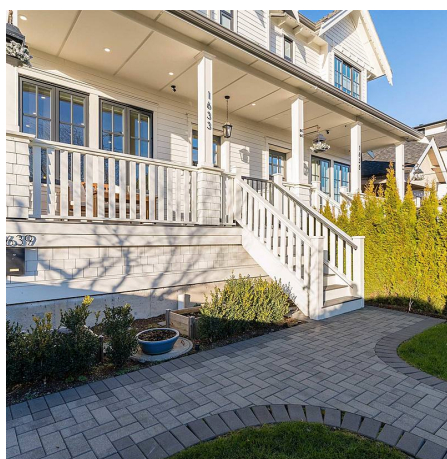
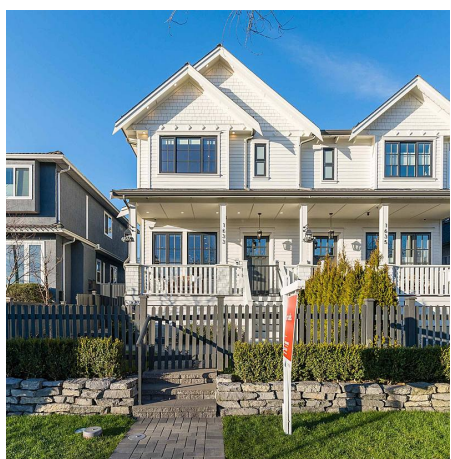
6 Bathrooms

2,464 SF

FEATURES

Year Built: 2020

Listed By: rennie & associates realty ltd.



Brandon Price PREC*
604.765.9555
bprice@rennie.com
rennie.com/brandanprice

rennie