

2351 Hawthorne Avenue, Port Coquitlam

\$1,850,000



ATTENTION DEVELOPERS, BUILDERS AND INVESTORS! Current RA2 zoning allows for up to 2.5 FSR. Prime location in Downtown Port Coquitlam with nearby access to West Coast Express and bus. Retail and Dining options located nearby. 30 minutes to Downtown Vancouver, 35 minutes to Vancouver International Airport, 20 minutes to SFU and 45 minutes to UBC. Functional home with 3 bedrooms upstairs, and 1 bedroom on lower level.

KEY INFORMATION

MLS® R2756508

Residential Detached

Central Port Coquitlam

4 Bedrooms

2 Bathrooms

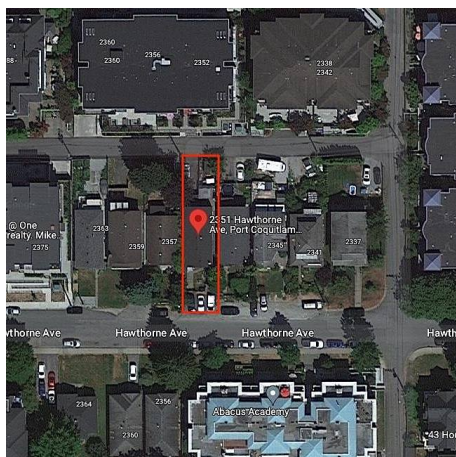
2,206 SF

4,026 SF Lot

FEATURES

Year Built: 1976

Listed By: Sotheby's International Realty Canada



rennie