

# 1701 258 Nelson's Court, New Westminster

\$519,900



Stunning views of the Fraser River & Mount Baker from your balcony! Located in the heart of New Westminister's Brewery District, this beautiful 1 bed, 1 bath home, by Wesgroup, features floor to ceiling windows providing ample natural light. The open living design maximizes space while the kitchen boasts quartz countertops, S/S KitchenAid appliances & gas range. The bright, generously sized bedroom comes with a large walk-in closet & 4-piece bath with a large soaker tub. The spectacular amenities include a 10,000 sqft clubhouse, gym, BBQ & dining area, terrace with lounge, playground, shared garden plots, bike wash, dog wash, EV chargers & more! This walk-to-everything community is just steps from the Sapperton Skytrain, transit, hospital, restaurants, Save-On, & only 5 minutes to Hwy 1.

## KEY INFORMATION

MLS® R2760357

Residential Attached

Sapperton

1 Bedroom

1 Bathroom

519 SF

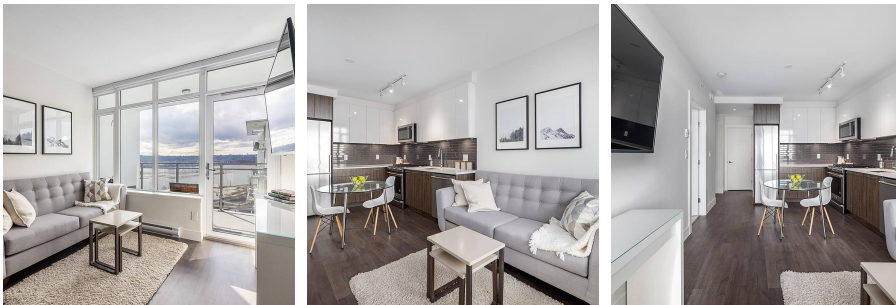
\$292.06 Maintenance Fees

## FEATURES

Year Built: 2020

Views: Fraser River, Mountains & City

Listed By: rennie & associates realty ltd.



**Derek Kai** PREC\*  
604.868.1666  
dkai@rennie.com  
rennie.com/derekkai



**Salina Kai** PREC\*  
604.773.7013  
skai@rennie.com  
rennie.com/salinakai

**rennie**