

1106 3533 Ross Drive, Vancouver

\$1,388,888



The Residences at Nobel Park built by Polygon is located at the desirable Wesbrook Village in UBC surrounded by trees and nature. This spacious and well maintained 2 bed 2 bath 1024 sqft interior w/ balcony facing north mountains, bedrooms facing east, living/dining room at the northeast corner; a lovely corner home you would appreciate. You can see water views from the living room! Features: A/C, 9 foot ceilings, bright engineering floors in living/dining, BOSCH 30" kitchen appliances, marble floor tiles, ensuite double sinks, rain shower, medicine cabinets. Building: full-time building manager on site, GYM, rec centre, EV charger. Nobel park and kids playground are near. Few minute walk to Save-on-Foods, Shoppers, BC Liquor, shopping, banks and restaurants. Open House: April 2, 2-4pm.

KEY INFORMATION

MLS® R2761514

Residential Attached

University

2 Bedrooms

2 Bathrooms

1,024 SF

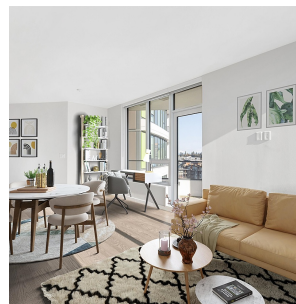
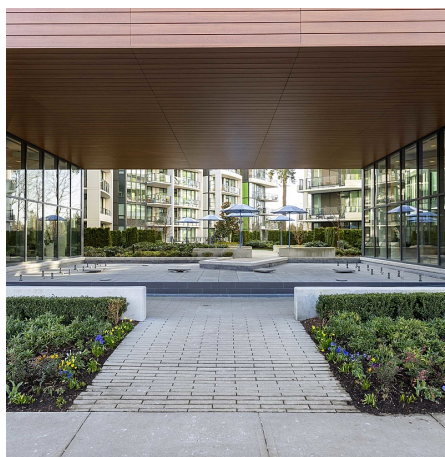
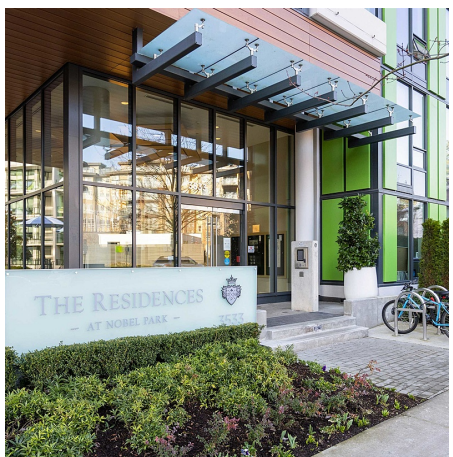
\$431.43 Maintenance Fees

FEATURES

Year Built: 2020

Views: Mountain, Forest, and Water

Listed By: rennie & associates realty ltd.



Ester Hsieh PREC*
778.552.4921
ehsieh@rennie.com
rennie.com/esterhsieh

rennie