

412 258 Nelson's Court, New Westminster

\$539,800



Welcome to The Columbia by Wesgroup! A gorgeous south facing 653 sq ft 1 BED + FLEX home offers views over the courtyard & out to the Fraser River from your covered balcony. Interior finishes inc L-shaped gourmet kitchen, quartz countertops, SS appliances, 5 burner gas range & a large pantry. Good sized flex for work at home & a bedroom with double closets & space for a dresser! Complete amenity package inc social lounge, entertainment kitchen, outdoor terrace, garden plots & Club Central - 10,000 SF of gym, squash, yoga studio & clubhouse. Pets & rentals ok. 1 parking, 1 locker. Prime location - steps to Sapperton SkyTrain, Save-On, Shoppers, Browns, Hospital & a short drive to Pier Park, NW Quay & Hwy 1. Invest or live in, this condo & neighbourhood has it all!

KEY INFORMATION

MLS® R2763320

Residential Attached

Sapperton

1 Bedroom

1 Bathroom

653 SF

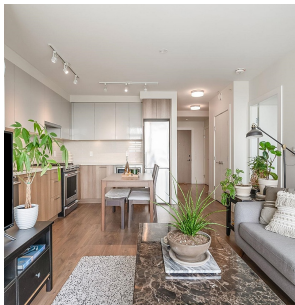
\$365.08 Maintenance Fees

FEATURES

Year Built: 2020

Views: FRASER RIVER, COURTYARD

Listed By: rennie & associates realty ltd.



Salina Kai PREC*
604.773.7013
skai@rennie.com
rennie.com/salinakai



Danny Chow PREC*
604.765.2469
dchow@rennie.com
rennie.com/dannychow

rennie