

629 Smith Avenue, Coquitlam

\$3,598,000



Attention Developers! Great investment and development opportunity in a highly sought-after Burquitlam! This is a land assembly. Centrally located in a unique and established neighborhood, within a walking distance of Burquitlam Station, YMCA, shopping and all levels of schools. The land is designated RM-3 in Coquitlam City's Official Community Plan, this zone allows for apartment developments up to 6 storey wood frame or 8 storey concrete at a medium density. The City of Coquitlam Burquitlam-Lougheed Neighborhood Plan expects "significant new growth along the SkyTrain corridor". Don't miss this opportunity!

KEY INFORMATION

MLS® R2767698

Residential Detached

Coquitlam West

5 Bedrooms

3 Bathrooms

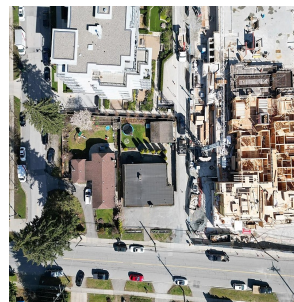
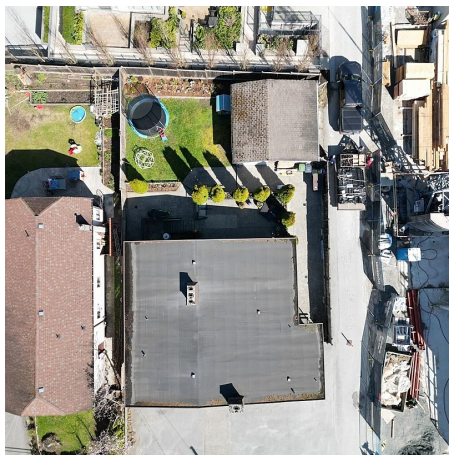
2,528 SF

7,688 SF Lot

FEATURES

Year Built: 1955

Listed By: RE/MAX City Realty



rennie