

2905 535 Smithe Street, Vancouver

\$999,000



Welcome to Dolce at Symphony Place, a centrally located downtown gem. This 2-bedroom suite, situated on a high floor, offers the best view of English Bay and the stunning city skyline.

Immerse yourself in the breathtaking vistas from the floor-to-ceiling windows in the living room or step out onto the balcony for an exhilarating experience. The stylish and well-maintained home boasts a luxury kitchen with stainless steel appliances and a spacious cozy living space enhanced by a warm gas fireplace. The master bedroom features a walk-in closet and a heated floor ensuite, ensuring comfort and convenience. The building provides a wide range of amenities, including a gym, lounge, hot tub, rooftop garden, and concierge service. Contact us today.

KEY INFORMATION

MLS® R2777048

Residential Attached

Downtown

2 Bedrooms

2 Bathrooms

1,004 SF

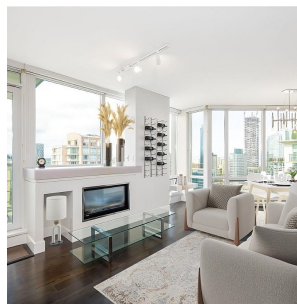
\$762.26 Maintenance Fees

FEATURES

Year Built: 2010

Views: CITY

Listed By: rennie & associates realty ltd.



Eaton Shi PREC*
778.829.0978
eshi@rennie.com
rennie.com/eatonshi

rennie