

# 2209 13615 Fraser Highway, Surrey

\$699,900



Welcome to King George Hub- the landmark transit-oriented community right by King George station in downtown core of Surrey! NE corner plan on the QUIET side of the building. Bedrooms are separated for privacy, open concept kitchen-living areas for entertainment, with separate dining area. Features integrated Blomberg & Fulgor Milano Appliances, and durable quartz countertops kitchen island. Amazing Amenities such as a large Fitness Centre and Yoga Studio, bike room, expansive 40th floor Rooftop Lounge with BBQ and seating areas, spacious Games Room, lounges, children's play area, and Theatre Room. Walking distance to many workplaces, shops, services and restaurants, including Central City Shopping Centre, T&T, SFU Surrey campus. 2 PARKING + 1 Locker Included! Call for more information.

## KEY INFORMATION

MLS® R2783115

Residential Attached

Whalley

2 Bedrooms

2 Bathrooms

802 SF

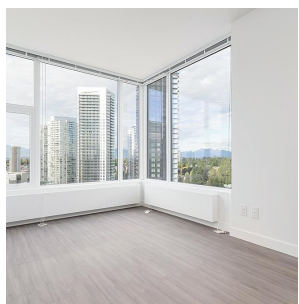
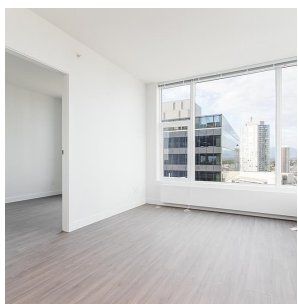
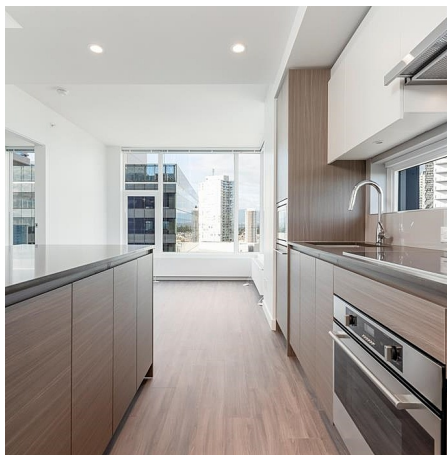
\$474.13 Maintenance Fees

## FEATURES

Year Built: 2021

Views: City

Listed By: rennie & associates realty ltd.



**Daniel Lu**  
604.435.8380  
dlu@rennie.com  
rennie.com/daniellu



**Hanson Lu** PREC\*  
604.787.2578  
hlu@rennie.com  
rennie.com/hansonlu

**rennie**