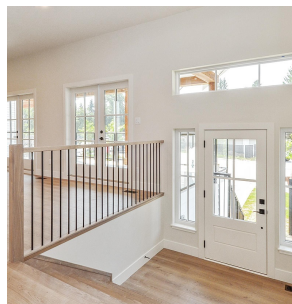
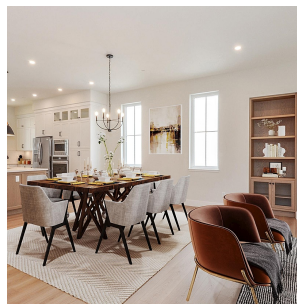


# 20847 Golf Lane, Maple Ridge

\$1,698,800



GOLF LANE-Exclusive WEST MAPLE RIDGE neighbourhood, overlooking the golf course. Seven Bedroom, Contemporary Farmhouse style built by TRUELIGHT Building & Dev Ltd. Seamless blend of modern design and one of a kind location. Open-concept layout seamlessly connects the living room, dining area, & kitchen, forming the heart of the home. Living rm features built in cabinets & fireplace, creating a cozy ambiance for relaxation or entertaining. The kitchen is a chef's dream. Main floor home office space plus a Bedroom.. Primary bedroom has a luxurious ensuite bath with a soaker tub and a spa-like shower. 3 more LARGE bedrooms upstairs. Thoughtfully considered living space in the level entry LEGAL 2 BDRM SUITE. Quick possession possible. OPEN WEEKENDS, 12:00-4:00 BOTH DAYS & TUES-THURS 3-5 PM.

## KEY INFORMATION

MLS® R2788106

Residential Detached

Southwest Maple Ridge

7 Bedrooms

4 Bathrooms

3,652 SF

4,814 SF Lot

## FEATURES

Year Built: 2023

Views: Maple Ridge Golf Course

Listed By: eXp Realty

rennie