

6119 176 Street, Surrey

\$1,750,000



****INVESTOR / BUILDER ALERT**** HUGE 12,073 sq/ft corner lot. Situated in the heart of Cloverdale, this location carries rezoning potential. A quaint, well-kept 2 bedroom 1 bath bungalow/farmhouse style home with 2 large outbuildings sits on the property. Central location across from The Cloverdale Arena. It is within walking distance of all amenities including shopping, recreation, parks, and a casino. Elementary schools are also within walking distance. A wonderful blank canvas for a dream home or hold for an investment.

KEY INFORMATION

MLS® R2792363

Residential Detached

Cloverdale

2 Bedrooms

1 Bathroom

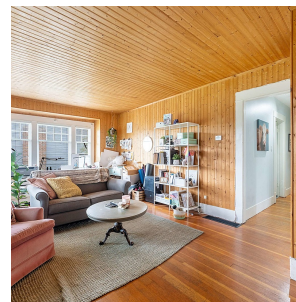
988 SF

12,073 SF Lot

FEATURES

Year Built: 1928

Listed By: 1NE Collective Realty Inc.



rennie