

13240 Stave Lake Road, Mission

\$1,699,900



Calling all outdoor enthusiasts, farmers, hobbyists, & nature lovers! This is the ultimate haven for those who cherish the great outdoors. Located in the back of Mission this 2 story home contains over 3,200 Sq Ft of living space and sits on a generous 9.98 Acres of usable land. The spacious residence features an open-concept layout, flooded with natural light, creating a warm & inviting atmosphere. 4 Bedrooms & 4 Bathrooms with updated flooring & paint throughout. Additionally, the expansive shop is a haven for car enthusiasts, hobbyists, or anyone in need of a versatile workspace. Lots of space for toys & for kids to run around. Bring your ideas here! Located close to recreation, hikes, trails & more. Minutes to downtown Mission's amenities & Hatzic. Rare opportunity here, call today!

KEY INFORMATION

MLS® R2794351

Residential Detached

Mission

4 Bedrooms

4 Bathrooms

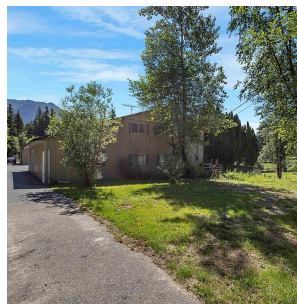
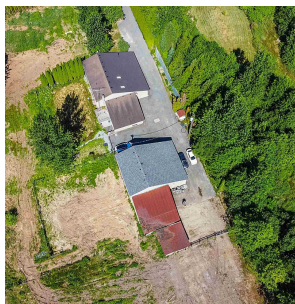
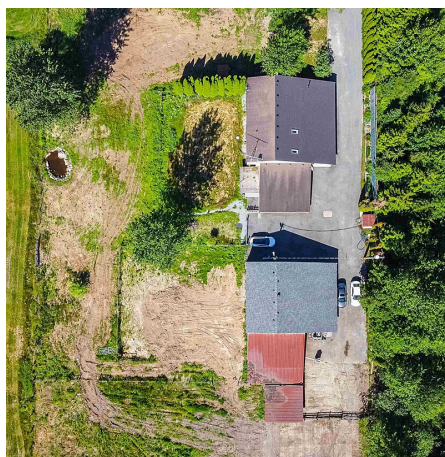
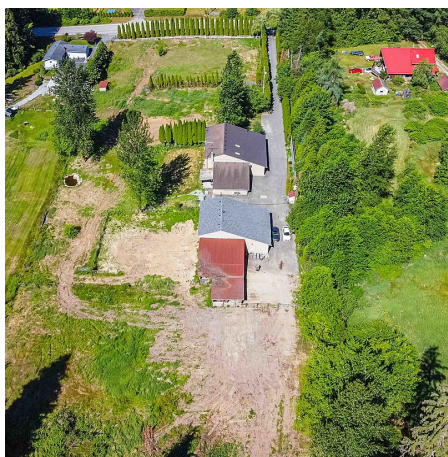
3,216 SF

428,824 SF Lot

FEATURES

Year Built: 1992

Listed By: Sutton Group-West Coast Realty (Abbotsford)



rennie