

# 13511 224 Street, Maple Ridge

\$3,500,000



**\*\*INVESTOR/BUILDER\*\*** 8 ACRES of land, FLAT, part of land has RS3 zoning ON COMMUNITY WATER (smaller lots SUBDIVISION POTENTIAL) \*\*\*\* Enjoy acreage living with all the PEACE, QUIET, SPACE, QUALITY and RELAXED LIFESTYLE ONLY 5 mins away from DOWNTOWN of MAPLE RIDGE for your amenity needs such as Haney Mall, City Hall, No Frills, all level of schools. Walking distance to nature walks, parks, Aloette River.... Just a short drive to all nature attractions City of Maple Ridge gets to offer such as Kanaka Creek, Whonnock Lake, Cliff Falls, Hayward Lake, Stave Lake, etc. BUILD LUXURY MANSION, BUY-HOLD, SUBDIVISION potential, lots of land for your ideas. Motivated Seller. Seller Finance may be available. Bring your offer.

## KEY INFORMATION

MLS® R2797440

Residential Detached

North Maple Ridge

3 Bedrooms

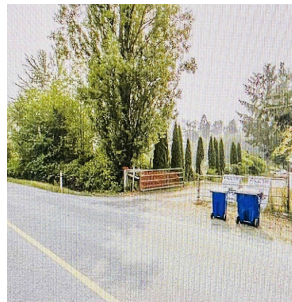
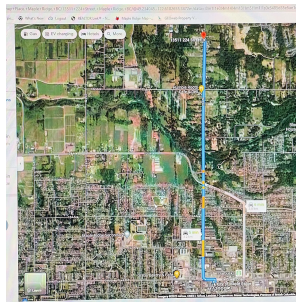
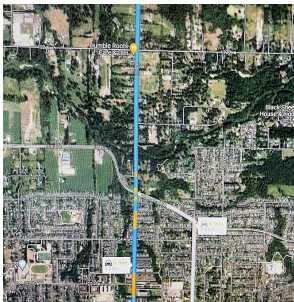
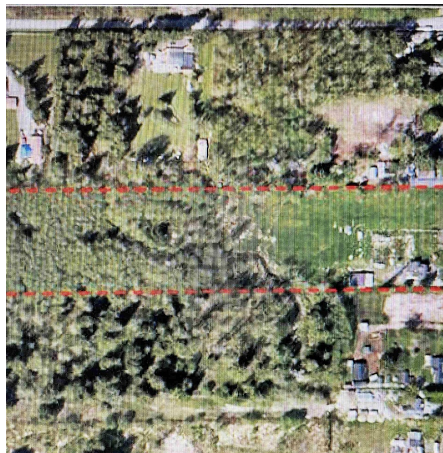
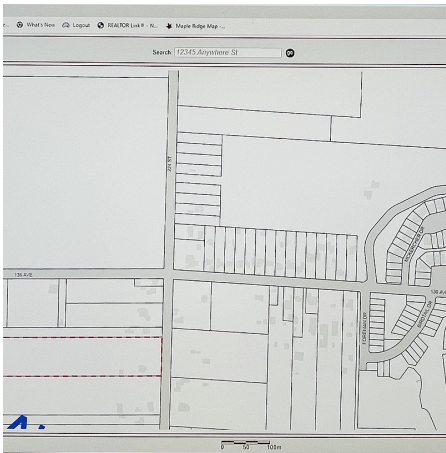
2 Bathrooms

2,364 SF

## FEATURES

Year Built: 1946

Listed By: LeHomes Realty Premier



rennie