

# 706 Charter Road, Mayne Island

\$669,999



A fantastic family home located in the popular Bennett Bay Area, where you are within walking distance to multiple beach accesses and the National Park. The .32 acre lot is fully fenced, sunny, level, great for family, pets and the avid gardener, with water catchment cistern and workshop. A paved driveway with ample parking for your RV toys. Private deck with pergola off the kitchen and living areas, separate dining or den, 3 pce bathroom with laundry on the main. Upstairs offers a full bathroom, 3 bedrooms the primary with a balcony. Downstairs is fully finished with own entrance, 4th bedroom, family room plus two separate rooms that could be transformed into whatever is needed i.e.(hobby, studio, boot room, in-law suite, also potential for a home based business such as BnB.)

## KEY INFORMATION

MLS® R2804505

Residential Detached

Mayne Island

5 Bedrooms

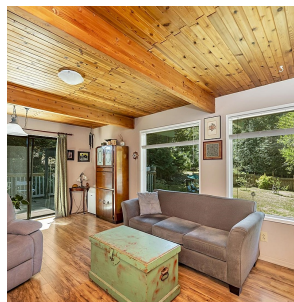
2 Bathrooms

2,310 SF

## FEATURES

Year Built: 1981

Listed By: Gulfport Realty



rennie