

180 Harris Road, Galiano Island

\$1,200,000



SECLUDED WHALER BAY RETREAT Discover the unspoiled beauty of this 12 acre waterfront oasis at Whaler Bay. Subdivision potential for 4 lots adjacent to Galiano's Golf Course. Dual homes to get you started – a spacious 1,330 sq' double-wide (1977) and a well maintained 480 sq' guest cabin (1995). Enjoy glimpses of Whaler Bay, ocean access, meadow vistas, a garage/workshop, charming studio, and a 65-year family legacy. Trails to the sandstone bay, minutes to swimmable, sandy, Twiss beach, and direct access to Putter Creek and the golf course. This private retreat with central convenience is your gateway to island recreation and endless possibilities!

KEY INFORMATION

MLS® R2804486

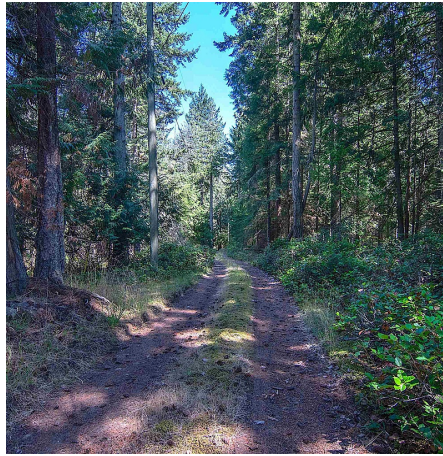
Residential Detached

Gulf Islands Other

4 Bedrooms

2 Bathrooms

1,330 SF

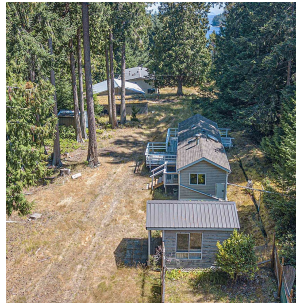


FEATURES

Year Built: 1977

Views: Glimpses of Whaler Bay

Listed By: Gulfport Realty



rennie