

7700 Pemberton Meadows Road, Pemberton

\$3,895,000



Explore this little-known haven only five minutes from downtown Pemberton. An exceptional property that boasts a sprawling 17 plus acres of pure, organic soil, abundant sunshine throughout the year, and breathtaking mountain vistas. It is a rare and one-of-a-kind opportunity seldom found in the area. It includes a lovely post and beam home, an income generating duplex, three garages, a mechanical shop, and farm out-buildings. Potential for growth is limitless with possibilities such as clearing trees for more farming, adding an equestrian facility, a new agritourism venture, or a farm stand set on your prestigious Meadows Road frontage. With personal touches, this rare gem can become an even more remarkable setting, offering boundless opportunities for a fulfilling & rewarding lifestyle.

KEY INFORMATION

MLS® R2808575

Residential Detached

Pemberton Meadows

3 Bedrooms

4 Bathrooms

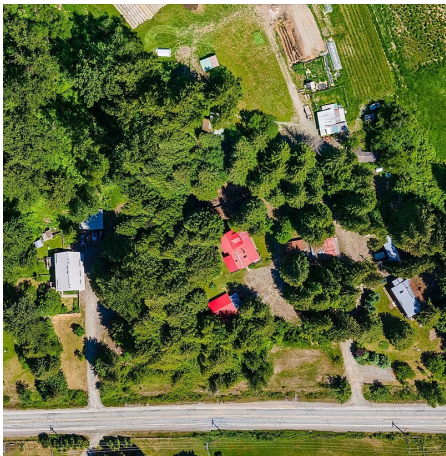
3,007 SF

FEATURES

Year Built: 1988

Views: MT CURRIE

Listed By: Royal LePage Sussex



rennie