

3359 Osprey Place, Whistler

\$7,400,000



3359 Osprey Place; located on one of the best streets in Whistler in the favourable Blueberry neighbourhood is a fantastic option for your Whistler escape! Private access to the Valley Trail connects you to all that Whistler has to offer. Enjoy a morning stroll around Arnold Palmer designed Whistler Golf Course, bike ride to the Village to dine at any of the terrific dining establishments and enjoy being within close proximity to Alta Lake, which is a spectacular year round spot whether you swim, skate, paddleboard, barge or simply relax taking in the breathtaking surroundings. Osprey Place is a wonderfully quiet, low density street with no thru road; if privacy is important to you this is definitely a location you will want to consider.

KEY INFORMATION

MLS® R2811255

Residential Detached

Blueberry Hill

6 Bedrooms

6 Bathrooms

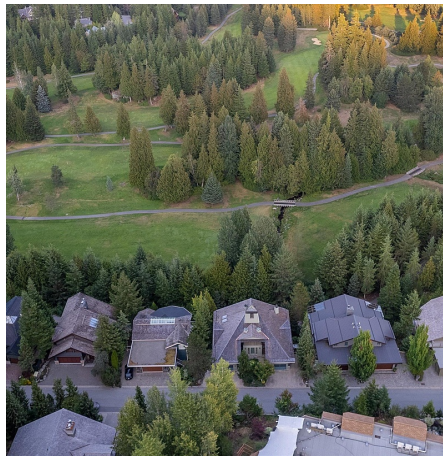
4,115 SF

FEATURES

Year Built: 1994

Views: Golf Course & Mountain Views

Listed By: Engel & Volkers Whistler



rennie