

9511 Emerald Drive, Whistler

\$2,699,000



The most gorgeous whistler 'cabin' is unlike anything else in Whistler. Rarely do you see a cabin keep its charm with everything brand new! This 2022 renovation was extensive but the look and feel of a cabin remained; Something the Whistler real estate market rarely see's but desires. This designer home boasts 3 bedrooms, with the primary on the main floor with its own luxurious ensuite. 2 bedrooms upstairs are separated by a TV/Flex room and a brand new bathroom. The kitchen is meticulously well thought out with custom millwork, a hidden pantry, coffee station and more. Every bit of this home was designed with purpose. Situated on a massive 10,736 sf lot, in the sunniest position in Emerald. Gorgeous views and 2 large sunny decks complete this absolutely stunning home-Book in your tour!

KEY INFORMATION

MLS® R2821462

Residential Detached

Emerald Estates

3 Bedrooms

3 Bathrooms

1,808 SF

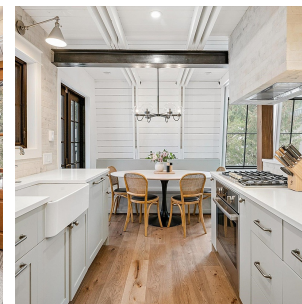
10,736 SF Lot

FEATURES

Year Built: 1976

Views: Mountain Views

Listed By: rennie & associates realty ltd.



Carleigh Hofman

604.805.5358

chofman@rennie.com

rennie.com/carleighhofman

rennie