

1047 Madeley Place, Whistler

\$2,480,000



This home must be seen to be fully appreciated. The quality construction is evident throughout. Gorgeous mill work and finishings. Bright, open, spacious living areas that spills onto a generous, fenced patio and fully landscaped yard. There is even a perfect playhouse for the kids. This home is ideal for entertaining guests. Meticulously maintained. Primary suite feels like luxury hotel living. Fantastic over height 2 car garage with full "garage guru" storage and racking systems for all your toys. Possibility to add an additional 1400sq feet to living space on 2nd floor. (must be confirmed with muni)

KEY INFORMATION

MLS® R2821735

Residential Detached

Cheakamus Crossing

3 Bedrooms

2 Bathrooms

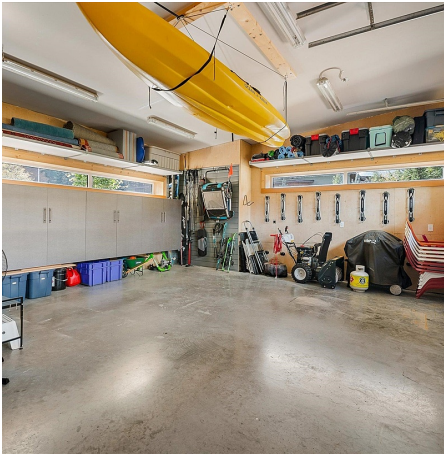
1,410 SF

5,922 SF Lot

FEATURES

Year Built: 2011

Listed By: rennie & associates realty ltd.



Merideth Schutter

604.999.8665

mschutter@rennie.com

rennie.com/meridethschutter

rennie