

18208 92 Avenue, Surrey

\$14,998,600



DEVELOPERS ALERT!! LOCATED NEAR HWY 1, HWY 15 & 96TH. 5 Acres in the desirable Port Kells location and located in future high density cluster zoning in the ANNIE DALE-TYNEHEAD NCP. Bill 44 could allow for higher density! Incredible 9,500+ square foot luxury estate with exquisite wood and beam accents contributing to its Whistler cabin design. The home features an open concept kitchen, natural light and an oversized primary bedroom with a double sided fireplace, his/her closets and a walkout balcony with views of the pastures. Not to mention, the property has several top end amenities including A OUTDOOR POOL, LARGE DETACHED WORKSHOP, SECOND DETACHED SHOP, TRIPLE CAR GARAGE, SAUNA ROOM AND EXERCISE ROOM. Please associated documents for information on this incredible investment opportunity.

KEY INFORMATION

MLS® R2821386

Residential Detached

Port Kells

5 Bedrooms

6 Bathrooms

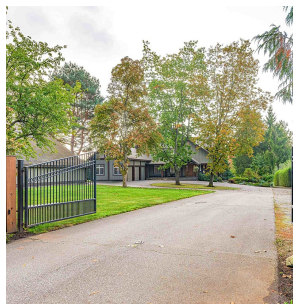
9,512 SF

217,800 SF Lot

FEATURES

Year Built: 2004

Listed By: Royal LePage - Wolstencroft



rennie