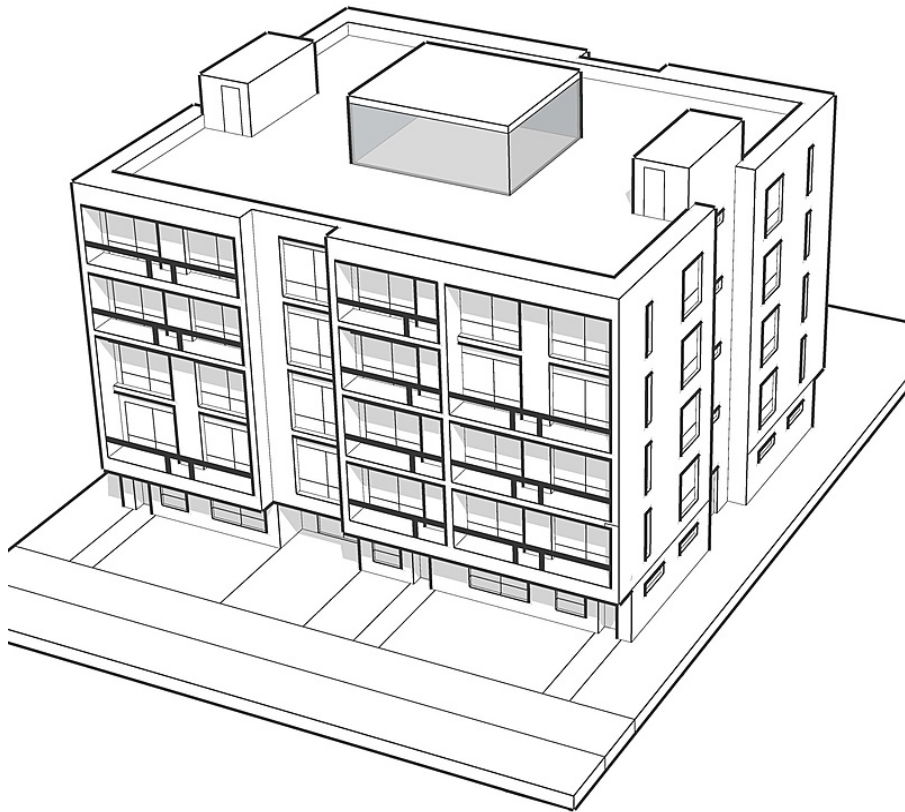


2122 W 33rd Avenue, Vancouver

\$5,250,000



Building Example

Great opportunity to purchase this 3 Lot Land Assembly with over 24,200 s/f. to own a 4-6 Storey Rental Building in Quilchena. 2106, 2118 & 2122 W.33rd. The corner lot is on an arterial road allowing greater potential. Great Location! Close by: Private and Public schools (Prince of Wales mini school, Quilchena Elem. Prince of Wales & Point Grey Secondary), Arbutus Club, Quilchena Park, Arbutus Greenway and Kerrisdale Shopping.

KEY INFORMATION

MLS® R2823976

Residential Detached

Quilchena

7 Bedrooms

5 Bathrooms

4,700 SF

7,788 SF Lot

FEATURES

Year Built: 1990

Views: MOUNTAIN

Listed By: Multiple Realty Ltd.