

25910 128th Avenue, Maple Ridge

\$1,688,000



Hey! So, There is this really cool rancher in Webster's Corner that was upgraded in 2023. It has a double garage/shop that was built in 2017 and it's fully finished with an o/h gas furnace. But get this, in 2018 they added a big 1278 sf. addition with a media room that has a wet bar, a change room, and a 2-piece bathroom! And the best part is, it has access to a pool and a huge glass-covered deck that's perfect for BBQs, a hot tub, and even a gas firepit! Oh, and there's a backyard play area for kids with a fort-style playroom and slide. Plus, there's a workshop for all your handy person needs and a shed for your mower and toys. The house even has new vinyl siding and a 5' high chain-link fence with 4 gates. And, if you love the outdoors, there are tons of nearby trails for hiking.

KEY INFORMATION

MLS® R2827562

Residential Detached

Websters Corners

3 Bedrooms

4 Bathrooms

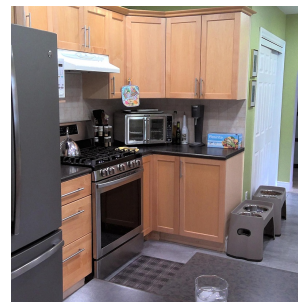
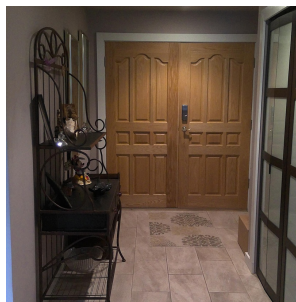
2,526 SF

36,190 SF Lot

FEATURES

Year Built: 1965

Listed By: Grand Central Realty



rennie