

9702 Devine Street, Devine

\$1,050,000



This landscaped 1.82 acre property located in a quiet residential subdivision offers privacy plus stunning mountain & forest views with crown land behind. The kitchen boasts high end appliances, including Fisher Paykel, Jenn Air, Grohe faucets & deluxe sinks. Stay cozy with a propane fireplace in the living room & wood stove below. Fully equipped wood working shop with bathroom/shower, w/d hookups, dust exhaust & full of tools. Green thumbs will enjoy the greenhouse, raised garden boxes, tool shed & 2 wood sheds. A large wrap around covered deck offers a perfect relaxing spot to enjoy the picturesque scenery year round & the best climate in the area. RV hookup & minutes to Anderson Lake. Suite potential in the lower level of this immaculate home as they don't come any better than this one!

KEY INFORMATION

MLS® R2827763

Residential Detached

Devine

4 Bedrooms

3 Bathrooms

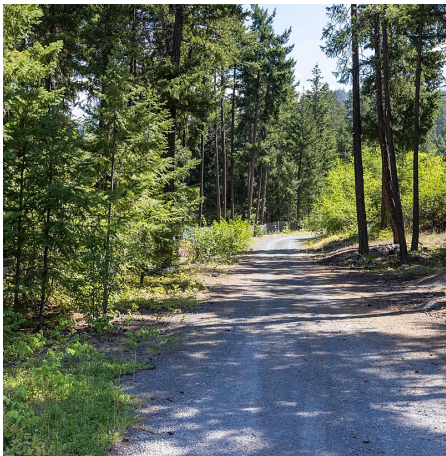
2,944 SF

FEATURES

Year Built: 2009

Views: MOUNTAINS

Listed By: Royal LePage Sussex



rennie