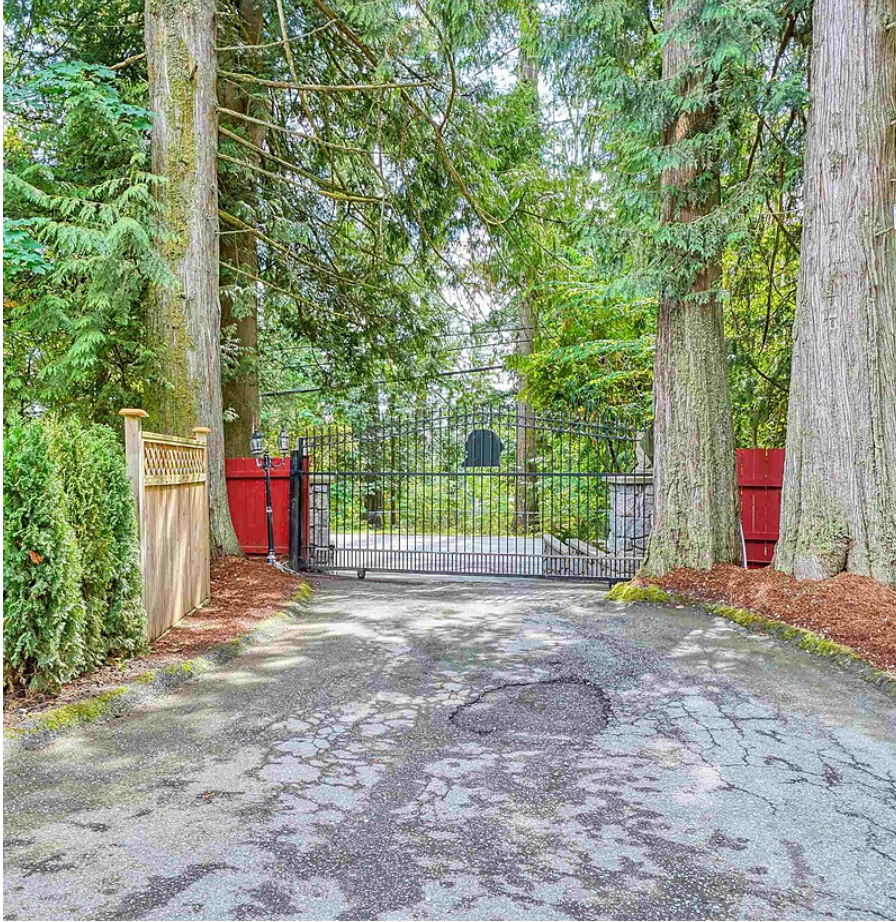


26935 100 Avenue, Maple Ridge

\$2,229,990



Looking for privacy? Take a look at this 5,054 SF very comfortable Tudor style home on 5 private, treed acres. Feats. include a welcoming grand entrance with 17' ceiling, spiral stair case, tiled & engineered flooring thru-out, hugh bedrms, grand, family & living rooms, updated kitchen with top of the line S/S fridge, convection stove & double built in convection oven. Covered patios & porches surround the home plus a separate patio with a hot tub enclosure, wired & ready to go. For the extended family, easy potential to create 2 suites with their own private patios. Large den on the main to a bdrm. Detached double garage, ample paved parking in front of the home & roughly 8,000 SF graveled area for RV's, etc. 24 hour Notice to Show between 11 am and 4 pm.

KEY INFORMATION

MLS® R2829253

Residential Detached

Thornhill

4 Bedrooms

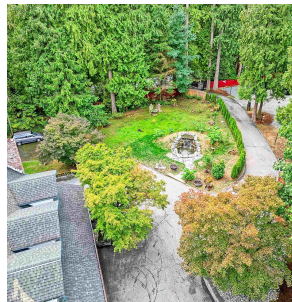
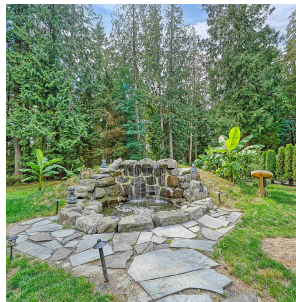
5 Bathrooms

5,054 SF

FEATURES

Year Built: 1979

Listed By: RA Realty Alliance Inc.



rennie