

8631 Fairdell Crescent, Richmond

\$3,280,000



Custom-built home sits on 6,000 SQFT lot, with 3,061 SQFT living space in central Rmd's finest neighborhood Seafair. This European style home boosts an open concept, full of exquisite details inside and out. Great open floor plan including 4 bdrms + 4 bathrms + 2 car garage. Excellent workmanship w/detailed finishing throughout, high ceilings in living and family room, Spice Kitchen, and Main Kitchen with high-end Miele appliances. Security system, Sound surrounding system, A/C, HRV, radiant heat, BBQ, etc.... Walking distance to Ocean and Golf Course and great school catchment.

KEY INFORMATION

MLS® R2832458

Residential Detached

Seafair

4 Bedrooms

4 Bathrooms

3,061 SF

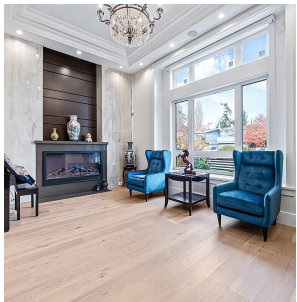
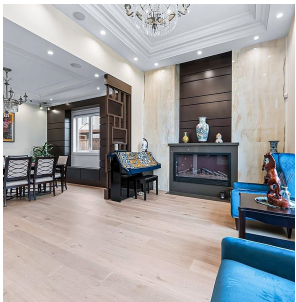
6,000 SF Lot



FEATURES

Year Built: 2017

Listed By: Pacific Evergreen Realty Ltd.



rennie