

105 7350 Crabapple Court, Pemberton

\$729,000



Welcome to 105 Orion, where affordability meets adventure and quality lifestyle. This 2 bedroom corner suite is located on the first floor, above grade, with 2 decks, a nice open concept living space, and an entry/flex room to use as an office/den or closet depending on your needs. The building was incredibly efficiently constructed with a central heating/cooling ventilation system which is included in your strata fees making it one of the most affordable 2 bedrooms. Enjoy the convenience of a dedicated oversized single garage in the parkade below, additional above ground parking and an assigned garden plot. A short walk takes you to the Elementary and High Schools, Community Centre, Skatepark and all the best that Pemberton has to offer. This is your home base for adventure in Sea to Sky!

KEY INFORMATION

MLS® R2833683

Residential Attached

Pemberton

2 Bedrooms

2 Bathrooms

942 SF

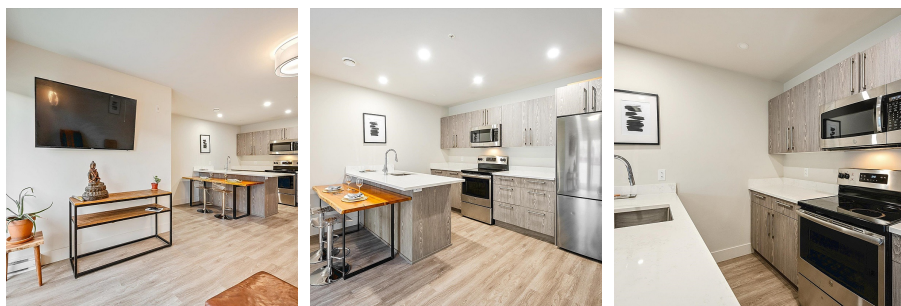
\$517.41 Maintenance Fees

FEATURES

Year Built: 2020

Views: MOUNTAIN

Listed By: rennie & associates realty ltd.



Rob Palm PREC*
604.905.8833
rpalm@rennie.com
rennie.com/robpalm

rennie