

4421 Parker Street, Burnaby

\$3,285,000



Land Assem

4407 & 4
Parker S
Burnaby

Lot Size:
12,200 sq

Land assembly w/ 4407 Parker (Next door). Large 3,100 sf house situated on a 50x12 lot in the heart of Willingdon Heights. This prime land assembly investment opportunity is minutes away from Brentwood Mall, Brentwood Skytrain, bus stops, Hastings shopping/amenities and much more! School catchment includes Kitchener Elementary & Alpha secondary, offering Early/Late French immersion. Convenient access to SFU, BCIT, Metrotown, and DT. Whether you're looking for a home or an investment, you don't want to miss this amazing 8 bed 4 bath w/ 2 two bedroom suites.

KEY INFORMATION

MLS® R2833764

Residential Detached

Willingdon Heights

8 Bedrooms

4 Bathrooms

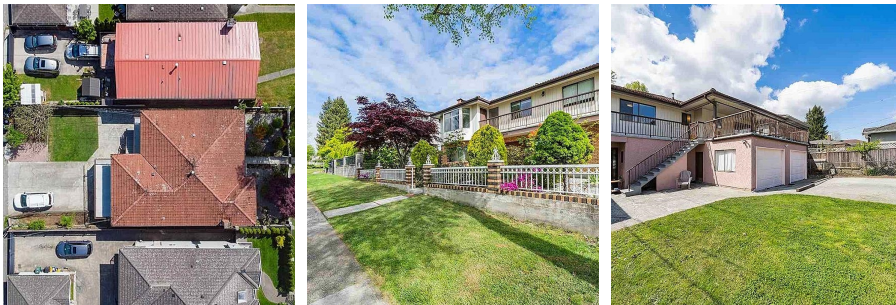
3,100 SF

6,100 SF Lot

FEATURES

Year Built: 1982

Listed By: RE/MAX City Realty



rennie