

1 321 Cumberland Street, New Westminster

\$1,598,000



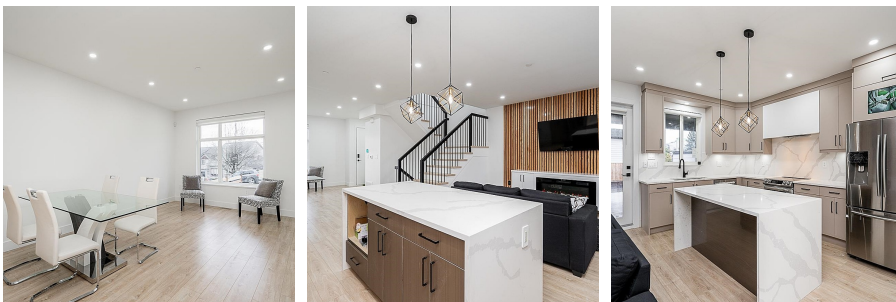
Brand New 1/2 Duplex in the heart of the Sapperton area with views of the Port Mann and Fraser River! Walking distance to Royal Columbian Hospital, the new Brewery District, transit, shops, and cafes. This Duplex offers 3 spacious bedrooms and 2 bathrooms upstairs with an open concept design on the main floor. It also includes a potential 1 bedroom mortgage helper in the basement with separate entrance. Sprinklers, Security cameras as well as an EV charger have also been installed. Open House on Dec 2/3 2-4pm!

KEY INFORMATION

MLS® R2834794
Residential Attached
Sapperton
4 Bedrooms
4 Bathrooms
1,962 SF
3,272 SF Lot

FEATURES

Year Built: 2023
Views: FRASER
Listed By: Planet Group Realty Inc.



rennie