

4210 Gladwin Road, Abbotsford

\$2,095,000



LOCATION! LOCATION! LOCATION! Private 5.13 Acres located just minutes Abbotsford city center and all amenities. **AMAZING VIEWS** private driveway leads to 2566 sq/ft secluded home! Bottom portion of the property **GREAT FOR TRUCKERS OR SHOP!** Fantastic location for your business! The 4-bedroom 2.5 bath home sits high and out of the floodplain and features a huge master bedroom w/ 4 piece ensuite and kitchen w/ quartz countertops & s/s appliances. Deck off the kitchen is perfect for entertaining or peaceful private setting. The property is situated minutes from MEI, all levels schools, shopping, entertaining and all amenities. Drilled well on property. Buyer to verify all information with City of Abbotsford. Contact for your private viewing.

KEY INFORMATION

MLS® R2836625

Residential Detached

Matsqui

4 Bedrooms

3 Bathrooms

2,566 SF

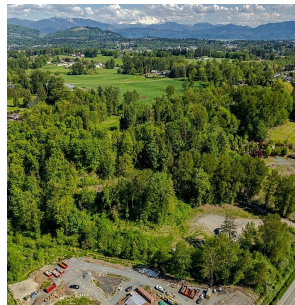
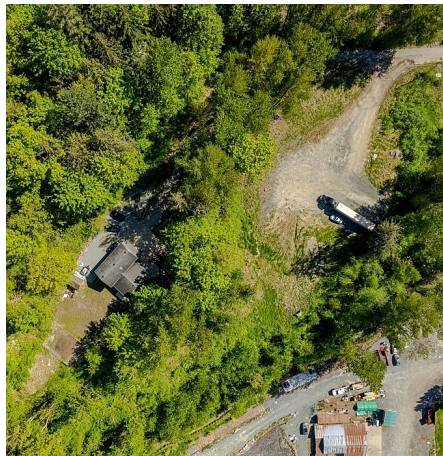
223,462 SF Lot

FEATURES

Year Built: 1984

Views: Mountains

Listed By: B.C. Farm & Ranch Realty Corp.



rennie