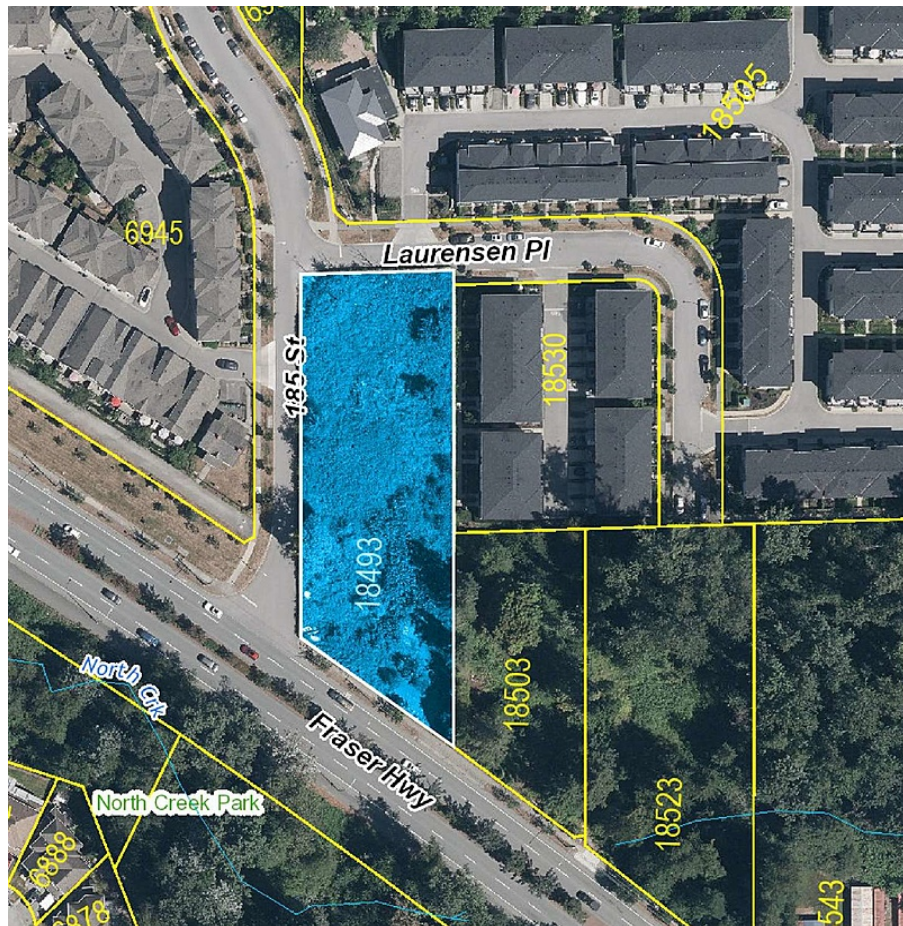


# 18493 Fraser Highway, Surrey

\$8,950,000



Transit oriented development property located right along Fraser Highway (only 225M from the future Sky Train Stop). Property is designated as Low Rise Residential (2.5 FAR) as per the latest Clayton Corridor Plan. Potential for higher density as per the recent Provincial Legislation that states any property that is located between 201-400M of a Sky Train stop will be permitted for 4.0 FAR, up to 12 storeys.

## KEY INFORMATION

MLS® R2837360

Land Only

Clayton

- Bedrooms
- Bathrooms
- SF

## FEATURES

Listed By: Homelife Advantage Realty (Central Valley) Ltd.