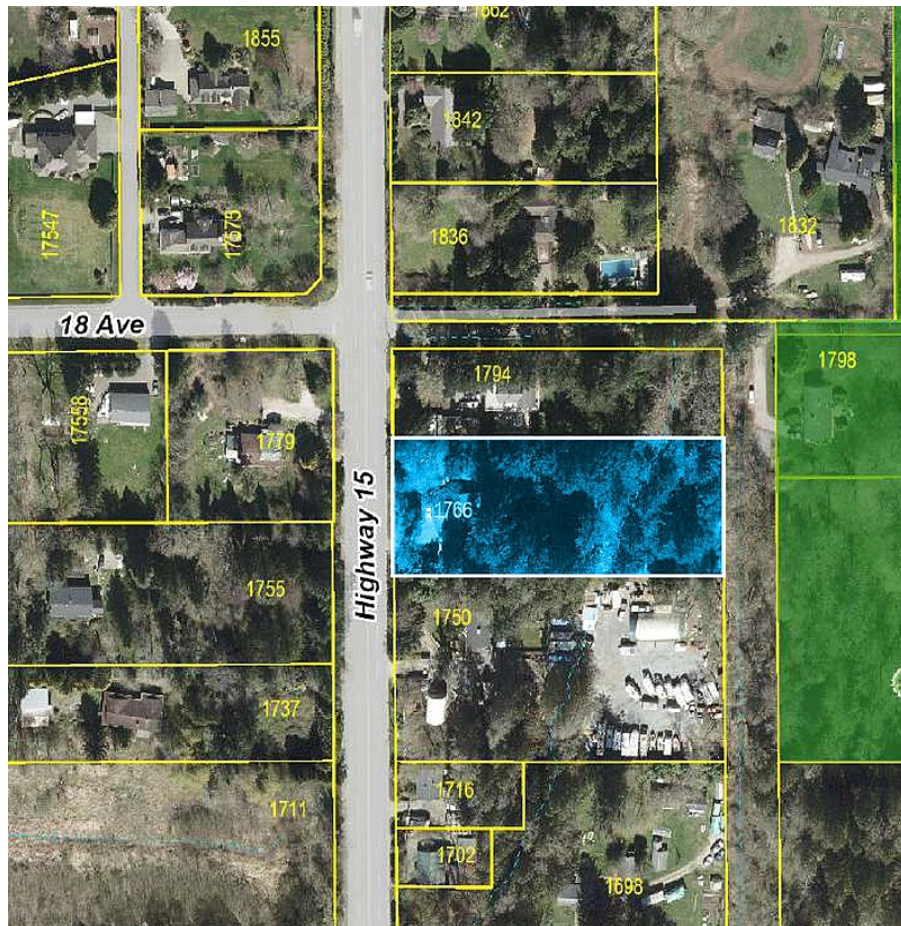


# 1766 176 Street, Surrey

\$7,000,000



Future townhouse site in a great location along Highway 15. Property is designated High Density Townhouse (25-30 UPA, up to 3 storeys). Easy access to 16 Avenue, Pacific Highway Border Crossing & Highway 99. Nice setting with Redwood Park backing on this property. Grandview Heights Aquatic Centre within a short drive, as well as the shops and restaurants at Grandview Corners.

## KEY INFORMATION

MLS® R2837339

Residential Detached

Hazelmere

3 Bedrooms

2 Bathrooms

2,170 SF

## FEATURES

Year Built: 1943

Listed By: Homelife Advantage Realty (Central Valley) Ltd.