

621 Bell Bay Rd, Mayne Island

\$699,000



If building a custom home that suits all your needs, then why not on this 2.21 acre waterfront property? Sloped down to the ocean in Bell Bay Estates this property has a drilled well, hydro pole in place, a spot cleared for parking and a place to keep a trailer to stay in during construction. This very private lot with views into Campbell Bay is part of a Strata which features a tennis court and small private dock for your boating needs. Zoned for house and guest cottage your development ideas will be soar! Come Feel the Magic! (id:56120)

KEY INFORMATION

MLS® 942804

Land Only

Mayne Island

0 Bedrooms

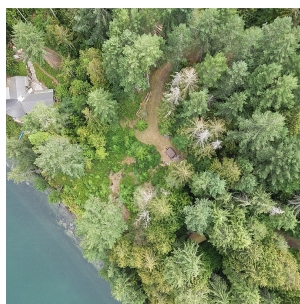
0 Bathrooms

0 SF

96,267 SF Lot

FEATURES

Listed By: RE/MAX Mayne-Pender



rennie