

2541 Pinnacle Ridge Drive, West Kelowna

\$1,489,999



Your opportunity to own a stylish new home designed for your family in Tallus Ridge! This 3417 square foot home includes a 1 bedroom 785 sq ft suite. The open style great room design provides access to the large covered back deck. Convenient pantry/mud room/laundry room off the kitchen. The primary suite also accesses the back deck, includes a luxurious ensuite with oversized shower, soaker tub, double vanity, water closet and walk in closet. 2 more bedrooms and full bathroom complete this level. Downstairs provides a large rec room with backyard access, 2 more bedrooms and bathroom, a 98 sqft storage room as well as a 1 bedroom suite. (id:56120)

KEY INFORMATION

MLS® 10284289

Residential Detached

Shannon Lake

6 Bedrooms

4 Bathrooms

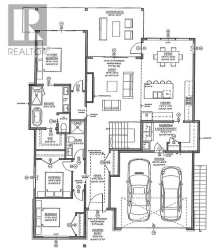
3,417 SF

8,276 SF Lot

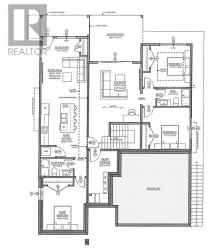
FEATURES

Year Built: 2023

Listed By: RE/MAX Kelowna



1 MAIN FLOOR PLAN
SCALE: 1/4" = 1'-0"
UNDEVELOPED AREA: 1,000 SQ. FT. (APPROX.)
DEVELOPED AREA: 2,417 SQ. FT. (APPROX.)



1 BASEMENT PLAN
SCALE: 1/4" = 1'-0"
UNDEVELOPED AREA: 1,000 SQ. FT. (APPROX.)
DEVELOPED AREA: 2,417 SQ. FT. (APPROX.)

rennie