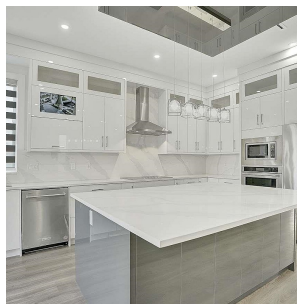
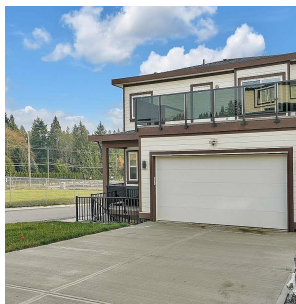
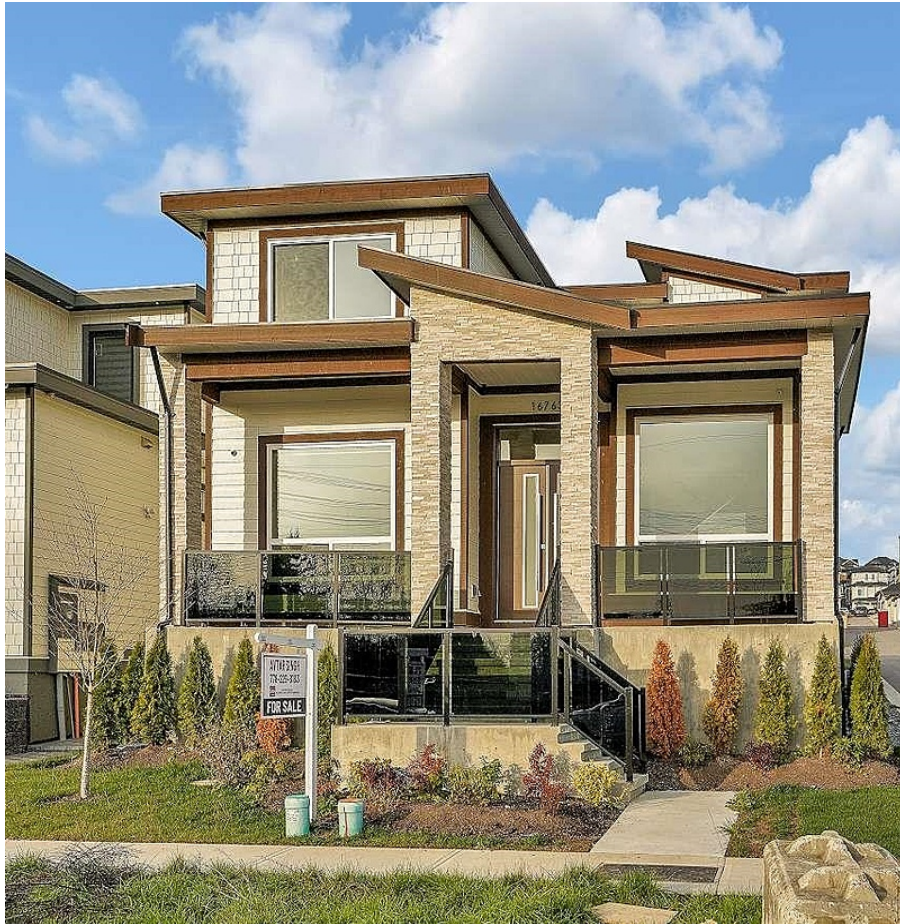


16763 15 Avenue, Surrey

\$2,099,999



Welcome to 16763 15 Ave South Surrey! Custom-built home with 9 bedrooms and 7 bathrooms situated on a 4900 sqft lot. The main level features spacious living and dining rooms with an open-concept kitchen and custom walls overlooking the patio. The upper level has 4 generous bedrooms and 3 full bathrooms. The house comes with two suites!(2+1) The lower level has a game room, theatre room and a mortgage helper. The area is great for families and investment. Many spots for parking and a spacious garage. The home has a new camera security system and is close to shopping centres, golf courses, recreation, parks and the beach!

KEY INFORMATION

MLS® R2838694

Residential Detached

Pacific Douglas

9 Bedrooms

6 Bathrooms

4,525 SF

4,843 SF Lot

FEATURES

Year Built: 2023

Listed By: Sutton Group-Alliance R.E.S.

rennie