

216 2450 Garden Drive, Vancouver

\$799,900



Grafia by Porte Homes is located on a quiet residential street just steps from Commercial Drive, transit and schools. It is designed by award winning interior designer BYU and Integra Architecture. The development will be a 6 story wood-frame building and amenities will include a social lounge, fitness center, dog wash station, rooftop terrace, garden plots and more. Completion anticipated Spring 2025. This beautiful one bedroom plus flex home is 649 SF facing East features full size stainless steel appliances with gas stove with laminate flooring through out. Generous sized 300 SF outdoor space, perfect for enjoying your morning coffee or hosting friends and family. Home comes with one parking and one bike locker. Presentation center is now closed, please contact us for more information!

KEY INFORMATION

MLS® R2841029

Residential Attached

Grandview Woodland

1 Bedroom

1 Bathroom

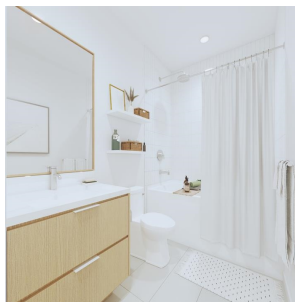
649 SF

\$357.28 Maintenance Fees

FEATURES

Year Built: 2025

Listed By: Porte Realty Ltd.



rennie