

3962 176 Street, Surrey

\$3,000,000



Must See! Approx. 2.063 acres (Approx. 147.69 ft x 606.49 ft) beautiful vacant farm land in Surrey Cloverdale. Located on the Hwy 15, and 100 feet far from the intersection of 40 Ave and Hwy15. Already pre-load for build approx. 5,306.08 sf new house. Under A-1 Agricultural zoning, good soil for nursery business and other uses. High traffic exposure, easy access to the Canadian/USA border & lower mainland area. A rare opportunity for people who are looking for hobby farm or vacant land to build dream home. Call now for more information!

KEY INFORMATION

MLS® R2841688

Land Only

Serpentine

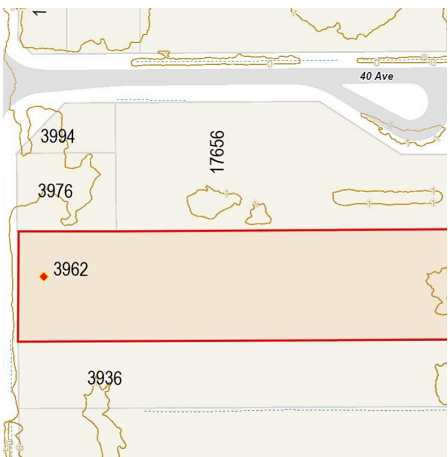
○ Bedrooms

○ Bathrooms

○ SF

FEATURES

Listed By: RE/MAX City Realty



rennie