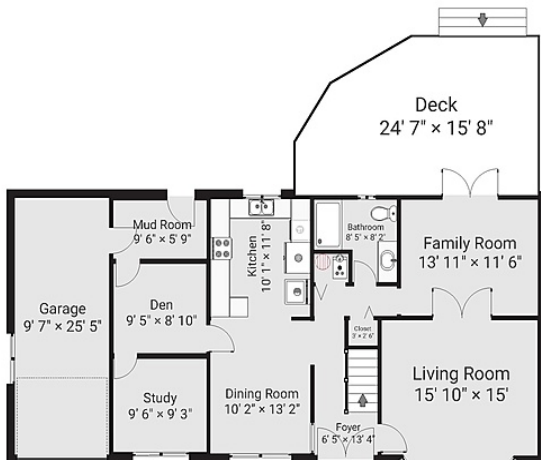
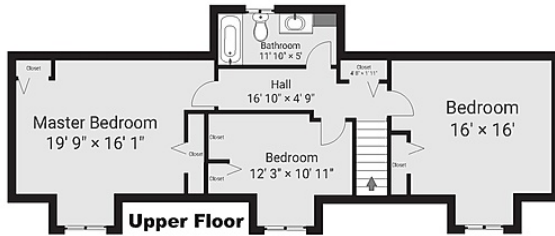


# 17232 61a Avenue, Surrey

\$1,439,000

Surrey

Upper Floor	874 sqft
Lower Floor	1,196 sqft
<b>Total Live Area:</b>	<b>2,070 sqft</b>
Garage	270 sqft
Deck	340 sqft



Rare Perfectly Rectangle 8472 SqFt Lot with Approx 71 Feet Frontage . All Level No Slopes ! NO RIGHT OF WAYS / EASEMENTS ! Back Yard with South Exposure . Front Facing North . Ground Level Full washroom is compatible with seniors with built in seat in Shower Pan ! Family room being used for Senior Bedroom ! Lots of Parking with extra Wide Driveway and Street Parking . Nice Neighbourhood Close to All Major Routes. Attractively Priced for quick sale . Showings on Weekend Through Bookings Only . Book Viewing Spot through Your Realtor . Recently changed hot water tank , Furnace repaired , Washer dryer less than 3 year old, dishwasher less than 1 year old .

## KEY INFORMATION

MLS® R2841436

Residential Detached

Cloverdale

3 Bedrooms

2 Bathrooms

2,070 SF

8,472 SF Lot

## FEATURES

Year Built: 1974

Listed By: Team 3000 Realty Ltd.