

# 4185 Bridgewater Crescent, Burnaby

\$688,000



Great Value at Village Del Ponte. This 2 bedroom 1 bathroom with 1070sqft interior and 2 patios totalling 680sqft. Your new home's floorplan is open and efficient and maximizes your living space. Bedrooms each have access to the back patio, cozy gas fireplace within your wide living space and opens to your 350sqft front patio, in-unit storage and laundry complete your home. Within your Development there is greenspace and a creek, an outdoor pool and clubhouse. Growing family or slowing down – 1000 plus sqft all on the ground floor and 680sqft fenced off outdoor space enhances your total value. Unbeatable location, walk to all your everyday conveniences - great restaurants, shopping and groceries, skytrain, and big box stores at Lougheed Mall. Easy transit and access to highways.

## KEY INFORMATION

MLS® R2842311

Residential Attached

Cariboo

2 Bedrooms

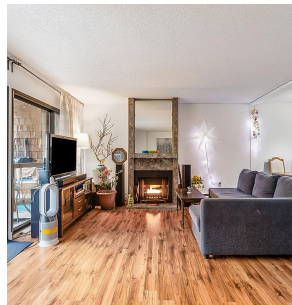
1 Bathroom

1,071 SF

## FEATURES

Year Built: 1976

Listed By: rennie & associates realty ltd.



**Howard Don**  
604.786.9998  
hdon@rennie.com  
rennie.com/howarddon

**rennie**