

203 10680 Mcdonald Park Rd, North Saanich

\$709,000



Welcome to this beautiful and bright 2 bedroom condo at Regatta Park with an expansive balcony and TWO designated parking stalls! The open floor plan boasts over 1200sqft of finished space, featuring a split bedroom design, perfect for owners who value privacy and space, SW-facing windows and balcony, a cozy gas fireplace and an in-unit laundry room. The modern kitchen showcases a large island, quartz countertops, soft-close cabinetry, SS appliances with a gas range. The primary bedroom has access to the balcony, a walk-through closet, and a luxurious 4-piece ensuite with heated tile floors. This property is located next to numerous parks, making it easy to enjoy the great outdoors, while the beautiful Blue Heron Basin waterfront marina is within walking distance, offering plenty of opportunities for boating and water sports. Situated in beautiful North Saanich and conveniently just minutes from the Swartz Bay Ferry Terminal! (id:56120)

KEY INFORMATION

MLS® 950752

Residential Attached

Sandown

2 Bedrooms

2 Bathrooms

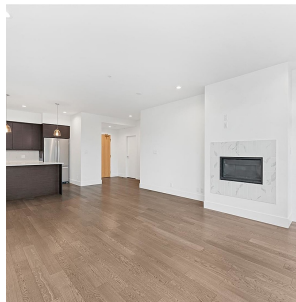
1,213 SF

1,213 SF Lot

FEATURES

Year Built: 2019

Listed By: rennie & associates realty ltd.



Raegan Hinks
250.732.3481
rhinks@rennie.com
rennie.com/raeganhinks

rennie