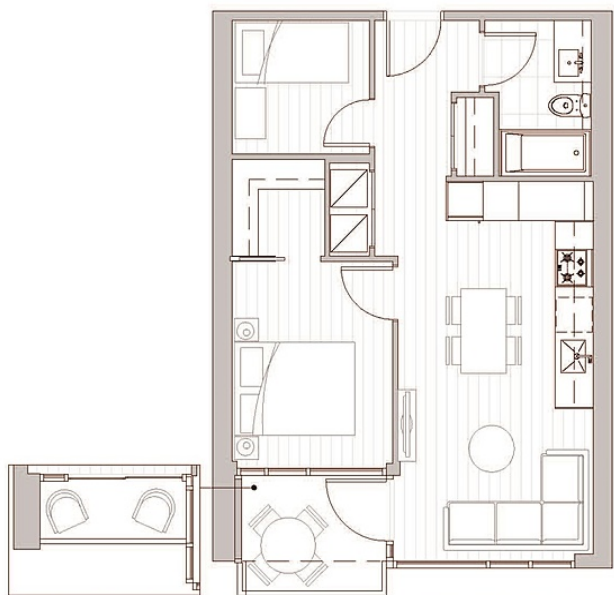


720 3300 Ketcheson Road, Richmond

\$690,000



PARK ESTATES II



Pull-out represents alternate balcony configuration for unit 15 only.

Dashed line represents the balcony area for units 15 on levels 6 - 9 only.

Actual suite plan may have minor variations from or be shown as a mirror image of the typical plan shown.



LEVEL 10 - 11



LEVEL 6 - 9



1 BEDROOM + GUEST

ENCLOSED AREA: 585 SF
OUTDOOR SPACE: 32 - 58 SF

Park Estates II, another masterpiece by Concord Pacific. Richmond's largest award winning landscape designed community garden and well known amenity club house called Diamond Club including indoor swimming pool, sauna/steam room, hot tub, basketball court, gym, bowling alley, movie theatre, game room and so on. Beautiful SOUTH facing 1 Bedroom + Den unit comes with walk in closet with LED, European high-end appliances, and central heating and cooling. Spacious balcony for your enjoyment. Walking distance to the upcoming Capstan Skytrain Station. Central location for shops & restaurants. 1 Parking Stall (PS-955) is included. Open House Sunday (March 3) from 2-4pm.

KEY INFORMATION

MLS® R2842692

Residential Attached

West Cambie

1 Bedroom

1 Bathroom

585 SF

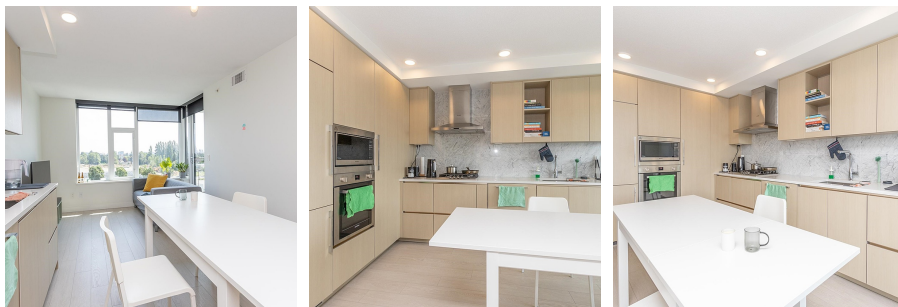
\$370.62 Maintenance Fees

FEATURES

Year Built: 2020

Views: City View

Listed By: Prompton Real Estate Services Inc.



rennie