

466 Fader Street, New Westminster

\$2,090,000



2 storay signle house, 4 ensuite bedrooms upper level and a huge roof top deck. 10 min walk to skytrain, easy access to Hwy1. Over sized garage from previous construction. Featured with an 2-bedroom legal suite and playroom, which can be a potential in-law suite.

KEY INFORMATION

MLS® R2842859

Residential Detached

Sapperton

7 Bedrooms

7 Bathrooms

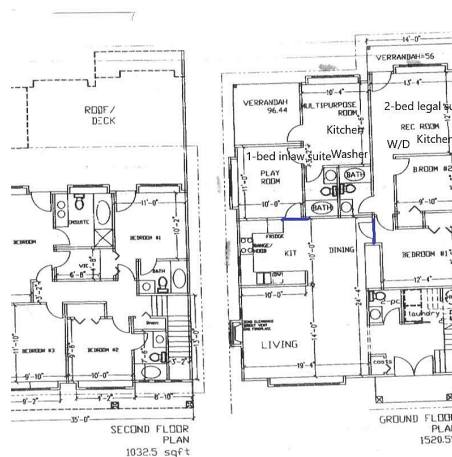
2,552 SF

5,108 SF Lot

FEATURES

Year Built: 2008

Listed By: Royal Pacific Tri-Cities Realty



rennie