

1530 Marble Pl, Langford

\$1,200,000



Welcome to this stunning brand new half duplex in the newest subdivision of Bear Mountain! This home built by reputable Scagliati Homes is located on arguably the best lot on the street backing on to forest for complete privacy. The walk out basement with separate entrance also allows for an excellent nanny suite scenario. On the main floor you will be impressed with a large open kitchen, dining and living space and balcony overlooking the natural landscape. The upper level of the home has 3 generously sized bedrooms including a luxurious primary bedroom with oversized walk in closet and spa inspired ensuite. This is a non conforming strata duplex with no monthly fees! Easy access to the highway and only 5 minutes to Costco, coffee shops and the best restaurants in the Westshore! Come find out what the best golf community in BC has to offer! (id:56120)

KEY INFORMATION

MLS® 951705

Residential Attached

Bear Mountain

5 Bedrooms

4 Bathrooms

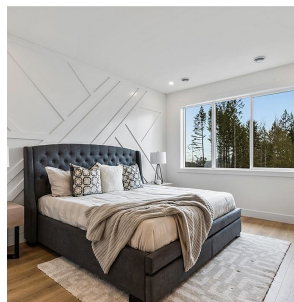
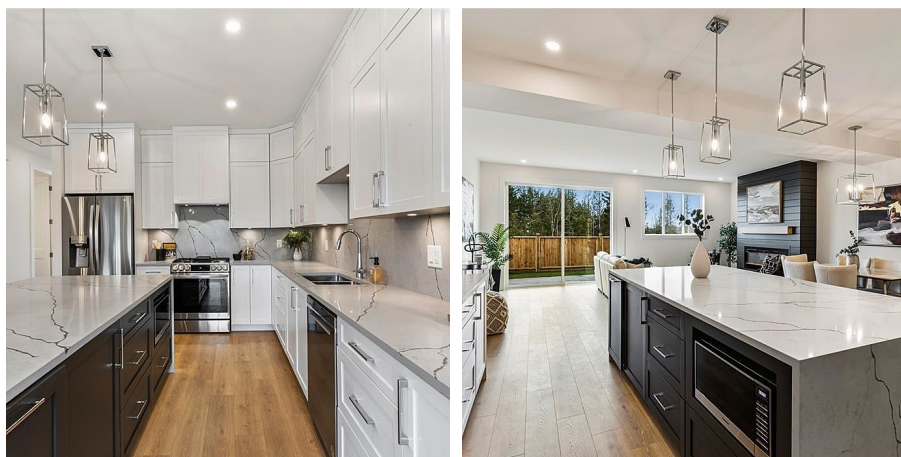
2,882 SF

5,586 SF Lot

FEATURES

Year Built: 2024

Listed By: eXp Realty



rennie