

# 410 Beach Crescent, Vancouver

\$2,998,000



Superb townhome in the prestigious King's Landing, just steps to seawall & parks. This stunning 2 level home offers 1600sf of luxurious air-conditioned living space. It features an open living/dining area on the main floor with over-height ceilings. Separate chef's kitchen with granite countertops, Sub-Zero fridge, Viking gas range & a huge walk-in pantry. Designer upgrades include heated marble floors on both levels & wall-to-wall custom closet in the master for added storage. Ensuite bath has steam shower. Gas hookup for your outdoor living in your private patio. World-class resort-like amenities include 80' indoor pool, sauna, hot tub, fitness centre, billard room, theatre, party lounge and more. 24 hr concierge service. 3 guest suites, 2 parking & a huge storage locker.

## KEY INFORMATION

MLS® R2845282

Residential Attached

Yaletown

2 Bedrooms

3 Bathrooms

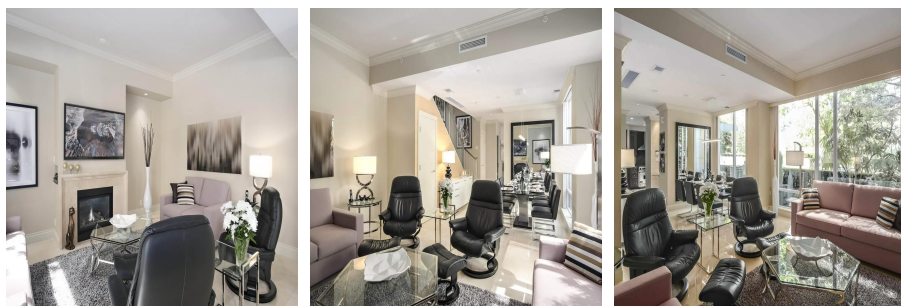
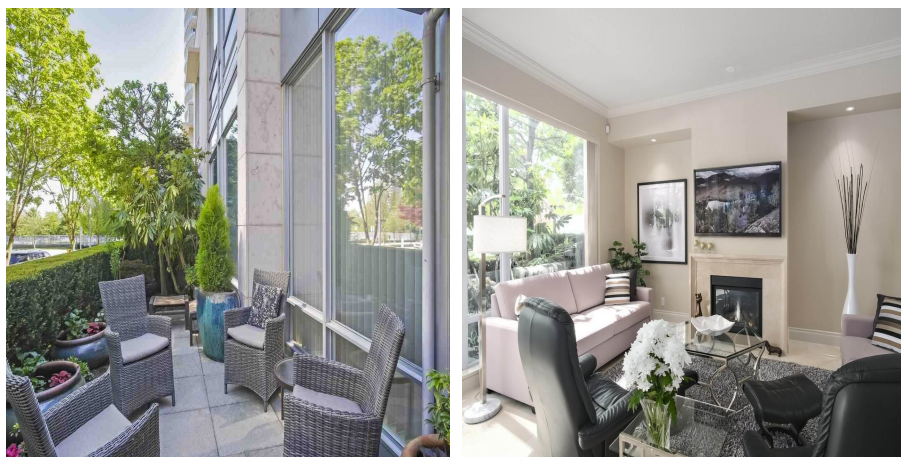
1,582 SF

## FEATURES

Year Built: 2005

Views: PARTIAL PARK VIEW

Listed By: RE/MAX Crest Realty



rennie