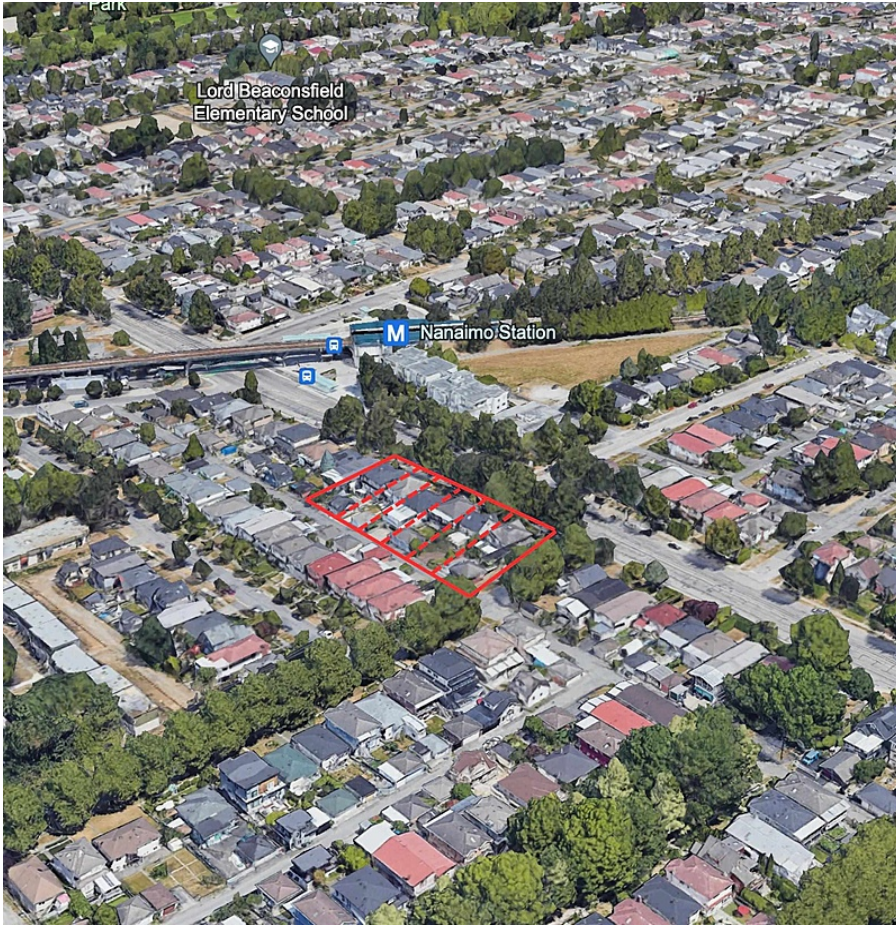


# 4289 Nanaimo Street, Vancouver

\$4,600,000



Transit-Oriented Development Site with amazing views! Perfectly located within 200 meters of the Nanaimo Skytrain station, capitalize on the new TOD, allowing for an impressive 5.0 FAR, to develop a towering 20-storey building. This site presents an unparalleled opportunity for expansion through a 4-6 lots land assembly and 250 FT frontage, expanding the potential lot size to 30,175 SF and unlocking up to 150,875 buildable SF. Leverage the potential for significant growth and development in a transit-oriented location and make a landmark impact in the area!

## KEY INFORMATION

MLS® R2846101

Residential Detached

Victoria

6 Bedrooms

6 Bathrooms

3,580 SF

6,035 SF Lot

## FEATURES

Year Built: 2000

Listed By: eXp Realty

